

# MDC

Mosaic Design company



## COMPANY PROFILE

Contact Us  
[info@modc-eg.com](mailto:info@modc-eg.com)

+20 1228125604  
+20 1277725017

2025



MOSAIC DESIGN CORPORATION  
DETAILS THAT MATTER


## Company Overview

Mosaic Design Corporation (MDC) is a leader in providing high-quality mechanical components and industrial solutions. We specialize in precision manufacturing exclusively, ensuring superior quality and rapid delivery. Our expertise lies in delivering tailored solutions that meet the highest industry standards, with the flexibility to manufacture both locally in Egypt or internationally, depending on the product's specifications and requirements.

At MDC, we conduct comprehensive inspections before delivery to guarantee reliability and performance. We embrace challenging projects and work closely with our clients by sharing technical information to develop the best solutions.

Contact Us

 [info@modc-eg.com](mailto:info@modc-eg.com)

 +20 1228125604  
+20 1277725017



MOSAIC DESIGN CORPORATION  
DETAILS THAT MATTER



MOSAIC DESIGN CORPORATION  
DETAILS THAT MATTER

## Vision

To be the most trusted and innovative provider of precision-engineered mechanical components, ensuring operational excellence and industry advancement.

## Mission

To deliver high-quality, custom-engineered mechanical parts with precision, reliability, and efficiency, meeting our clients' demands in record time while maintaining superior quality standards. We work according to international standards, ensuring our solutions are both innovative and reliable.

## Core Values

1. **Excellence in Quality:** We provide only the highest standard products.
2. **Innovation & Customization:** We specialize in precision manufacturing and custom spare parts.
3. **Customer-Centric Approach:** We meet our clients' needs with speed and efficiency.
4. **Technical Expertise & Reliability:** We ensure comprehensive testing and compliance with international standards.
5. **Flexibility in Manufacturing:** manufacture both locally and internationally based on the required specifications.
6. **Commitment to Reliability:** using reliable materials and suggest alternative materials if the original is unavailable, with full responsibility based on scientific criteria.
7. **Experienced Outsourcing:** Our deep industry knowledge enables us to provide expert outsourcing solutions, ensuring the best results for our clients.
8. **Confidentiality & Contracts:** We adhere to NDA agreements and formal contracts to protect our clients' intellectual property and business interests.

## Products

MDC specializes in the supply and manufacturing of essential mechanical parts, including:

1. **Mechanical Spare Parts** (Rollers, Drums, Wire Sheave, Bearing Brackets, etc.)
2. **Pump Spare Parts** (Volute Casing, Impeller, Auxiliary Impeller, Wear Desk, Wear Plates, Bushing, Pump Partitions, etc.)
3. **Mining - Crushing Spare Parts** (Hammers, Wear Plate, Impact Plate, Rotating Drums, Jaw Fixed and Movable Plates, Blow Bars, etc.)
4. **Cement Spare Parts** (Cooler Plate, Lifter Linear Plate, Hammers, Diaphragm Plate, etc.)
5. **Custom Spare Parts & Precision Components** (Lengthening Bushing, Spacers, Rollers, Sheet Metal Parts, etc.)
6. **Plastic Injection Parts** (Casing, Balance Weight, Inspection Chambers, etc.)
7. **Infrastructure** (Ductile Iron Manhole Covers, GRP Manhole Covers, Linear Drainage, Catch Basin Covers, Side Drain, etc.)
8. **Water and Drainage** (Wall Thickness, Connections, Flanged Fittings, Socket Fittings, Dismantling Joints, Valves, Accessories, etc.)
9. **HVAC & Firefighting Components** (Threaded Fittings, Seamless Fittings, Y-Strainers, Basket Strainers, HVAC Grills, etc.)
10. **Rubber and polyurethane products** (roller coverings and pulley rubber coatings, etc.)





MOSAIC DESIGN CORPORATION  
DETAILS THAT MATTER

## Services

### 1. Casting:

- Aluminum Alloys.
- Copper Alloys.
- Heat Resistant Alloys.
- Stainless Steel and Corrosion Resistant Alloys.
- Wear and Impact Resistant Alloys.
- Carbon and Low Alloy Steel Alloys.
- Cast Iron (Ductile & Gray).
- Stainless Steel Duplex.
- Supplying any Ferrous Alloy to customers.

### 2. Powder Metallurgy:

- **Ferrous Materials (Iron-Based):** Iron (Fe) Powders, Steel Powders, Cast Iron Powders.
- **Non-Ferrous Materials:** Copper and Copper Alloys (Bronze, Brass), Aluminum Powders, Nickel and Nickel Alloys, Titanium Powders.
- **Composite and Specialty Materials:** Tungsten Carbide (WC) with Cobalt (Co), Graphite (C-Base) Powders.

### 3. Machining: (Cast Iron, Aluminum, Copper, Stainless-Steel, Stainless-Steel Duplex, Any Ferrous Metal)

- CNC Milling (4-axis – 5-axis)
- Turning & Milling
- Drilling
- Wire Cut
- Spark Erosion

### 4. Sheet Metal Works:

- Materials: Aluminum, Stainless Steel, All Sheet Metals.
- Machining: CNC Laser Cutting, CNC Bending, Drilling, Welding.

### 5. Reverse Engineering Process:

- Comprehensive re-engineering from scratch, tailored to customer requirements, including option studies, prototyping, and testing.
- 3D Scanning, Meshing, Material Analysis, Manufacturing, Testing

### 6. Rubber and Polyurethane Products :

- Manufacturing Rubber and Polyurethane Products, with hardness ranging from 25 to 100 Shore A durometer in all colors.





MOSAIC DESIGN CORPORATION  
DETAILS THAT MATTER

## Market & Industries Served

MDC operates on a B2B model, focusing on high-quality solutions for various industries, including:

1. Construction & Infrastructure Projects
2. Government Tenders & Consulting Firms
3. Factories (Food, Pharmaceuticals, Chemicals, Cement, Mining, and Pump Industries)
4. Mechanical Contracting Companies (MEP)
5. Maintenance & Operation Companies

## Competitive Advantage

1. Expertise in Custom & Precision Manufacturing
2. Fast and Efficient Order Fulfillment While Maintaining High Quality
3. Comprehensive Testing to Meet International Standards
4. Review Designs Using Computational Analysis.
5. Strong International Partnerships with trusted suppliers from Turkey & China
6. Reliable Logistics & Supply Chain ensuring timely product delivery
7. Excellent After Sale Service.
8. Variety Material and Sizes.

## Pump's Spare Parts



### Description

Reverse engineering & manufacturing a comprehensive range of pump spare parts, including volute casings, impellers, auxiliary impellers, wear plates, and rear plates, designed for pumps used in water supply, chemical, industrial processes, and steam systems, ensuring compatibility and optimal performance tailored to client specifications.

### Key Features:

- Available in various configurations with customizable dimensions and materials.
- Manufactured from durable materials such as cast iron, stainless steel, duplex, chromium steel, or client-specified alloys.
- Designed to meet stringent balance, material, and performance tests per client requirements.
- Suitable for replacement and maintenance of pumps handling water, steam, chemicals, and other fluids.
- Offers 3D scanning capabilities up to 4 meters per dimension for accurate geometries of complex or legacy parts.
- Includes complete documentation and certification upon delivery: material certificates, dynamic balancing certificates, pump curve certificates, and sealing compatibility certificates.

Contact Us

✉ [info@modc-eg.com](mailto:info@modc-eg.com)



+20 1228125604

+20 1277725017

# MODC

MOSAIC DESIGN CORPORATION  
DETAILS THAT MATTER

# Impellers



## Description

MDC manufactures impellers through reverse engineering, producing them according to the required materials and delivering high-quality products that comply with balance tests, material tests, and all other client-specified tests.



## Key Features:

- Customizable dimensions, materials, and specifications as per reverse engineering process.
- Available in various types: closed, open, or semi-open impellers.
- Manufactured from diverse materials based on the application, including cast iron, stainless steel, duplex, chrome steel, or any other client-specified material.
- Ensures high precision and quality through rigorous testing and balance checks.

Contact Us

✉ [info@modc-eg.com](mailto:info@modc-eg.com)

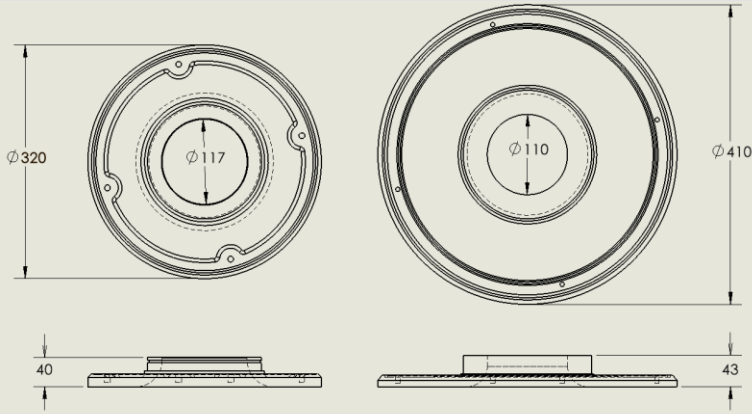


+20 1228125604  
+20 1277725017

**MDC**  
MOSAIC DESIGN CORPORATION  
DETAILS THAT MATTER



# Pump Wear Plate & Disc



## Description

Stainless Steel Slurry Pump Wear Plate & Disc (Other Materials are available including: Cast Iron, Aluminum...etc.)

**Material:** Duplex Stainless Steel ( Rare Alloy as per client's request)

## Weights:

- Wear Plate: 11 kg (Post Machining)
- Wear Disc: 7 kg (Post Machining)

**Manufacturing Method:** Sand Casting and Machining



Contact Us

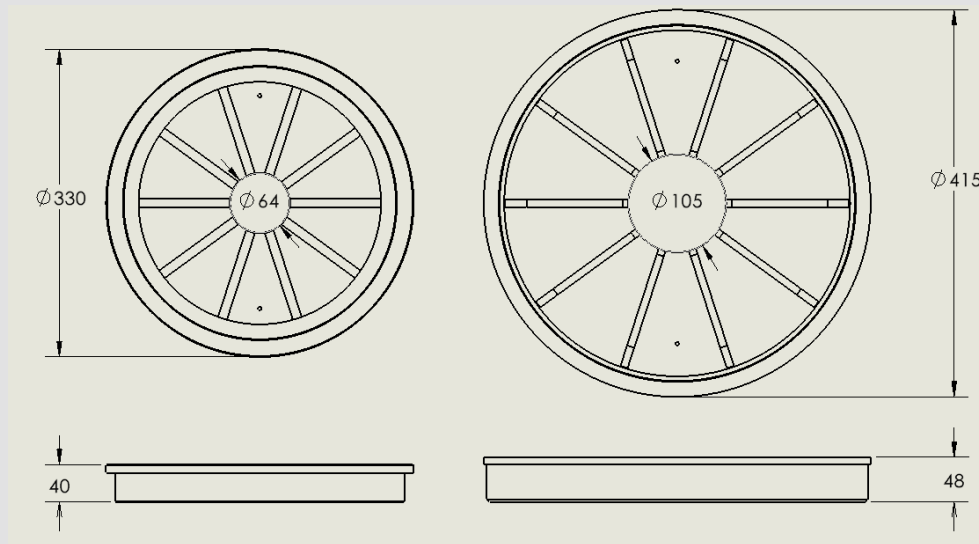
✉ [info@modc-eg.com](mailto:info@modc-eg.com)



+20 1228125604  
+20 1277725017

**MDC**  
MOSAIC DESIGN CORPORATION  
DETAILS THAT MATTER

# Pump Partitions



## Description

Stainless Steel Slurry Pump Partitions (Other Materials are available including: Cast Iron, Aluminum...etc.)

**Material:** Duplex Stainless Steel ( Rare Alloy as per client's request)

## Weights:

- Partition A : 10 kg (Post Machining)
- Partition B : 20 kg (Post Machining)

**Manufacturing Method:** Sand Casting and Machining



Contact Us

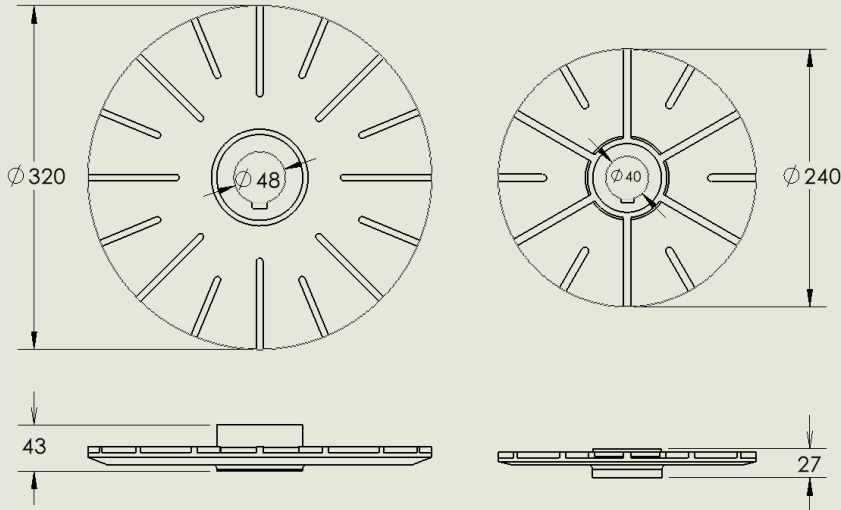
✉ [info@modc-eg.com](mailto:info@modc-eg.com)



+20 1228125604  
+20 1277725017

**MODC**  
MOSAIC DESIGN CORPORATION  
DETAILS THAT MATTER

## Pump Auxiliary Impellers



### Description

Stainless Steel Slurry Pump Auxiliary Impellers (Other Materials are available including: Cast Iron, Aluminum...etc.)

**Material:** Duplex Stainless Steel ( Rare Alloy as per client's request)

### Weights:

- Auxiliary Impeller A : 3 kg (Post Machining)
- Auxiliary Impeller B : 6 kg (Post Machining)

**Manufacturing Method:** Sand Casting, Machining and Balancing



Contact Us

✉ [info@modc-eg.com](mailto:info@modc-eg.com)



+20 1228125604  
+20 1277725017

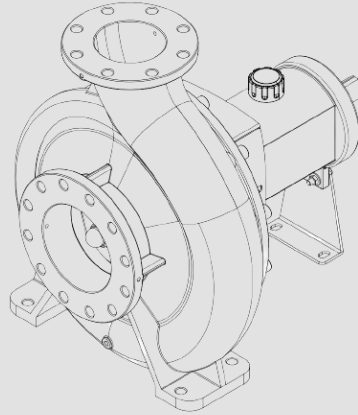
# MODC

MOSAIC DESIGN CORPORATION  
DETAILS THAT MATTER

# Pump Volute Casing

## Description

Stainless Steel Slurry Pump Volute Casing (Other Materials are available including: Cast Iron, Aluminum...etc.)



**Material:** Duplex Stainless Steel ( Rare Alloy as per client's request)

**Weights:** 100 kg (Post Machining)

**Manufacturing Method:** Sand Casting and Machining.



Contact Us

✉ [info@modc-eg.com](mailto:info@modc-eg.com)



+20 1228125604  
+20 1277725017

**MODC**  
MOSAIC DESIGN CORPORATION  
DETAILS THAT MATTER



# Bearing Bracket



## Description

Reverse Engineering of Stainless Steel Bearing Bracket

**Material:** Stainless Steel 304

**Weights:** 105 kg (Post Machining)

**Manufacturing Method:** Casting and Machining.

Contact Us

✉ [info@modc-eg.com](mailto:info@modc-eg.com)

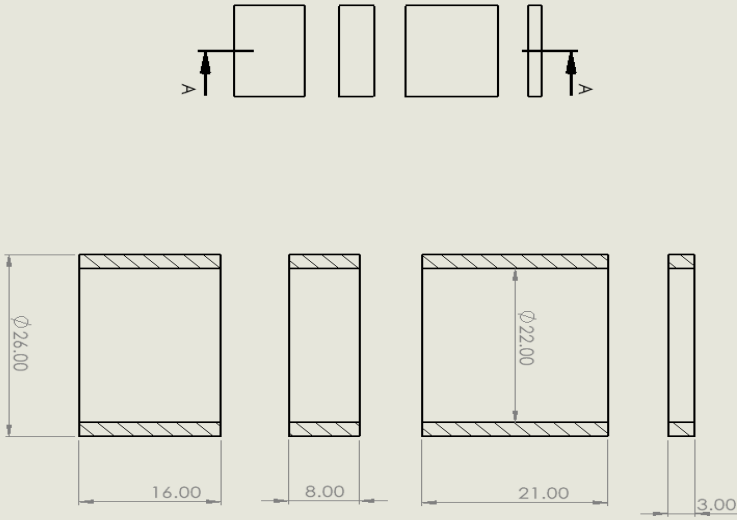


+20 1228125604  
+20 1277725017

**MODC**  
MOSAIC DESIGN CORPORATION  
DETAILS THAT MATTER



# Tungsten Carbide + Cobalt Bushings



## Description

Tungsten Carbide + Cobalt pump bushings

**Material:** Tungsten Carbide

**Customization:** Customized dimensions and profiles are available upon request

**Manufacturing Method:** Powder Metallurgy.



Contact Us

 [info@modc-eg.com](mailto:info@modc-eg.com)



+20 1228125604  
+20 1277725017

**MODC**  
MOSAIC DESIGN CORPORATION  
DETAILS THAT MATTER

# Valves & Fittings

## Description

MDC supplies a variety of fittings and connections, including Wall Thickness, Connection Types, Flanged Fittings, Socket Fittings, Dismantling Joint and a variety of valves as Gate Valve, Check Valve, Butterfly Valve, Ball Valve, and Globe Valve, designed to meet diverse needs for water and steam applications.



## Key Features:

- Valves suitable for water or steam applications.
- Supports various applications including drainage and water systems.
- Includes boiler and steam valves.
- Operating pressures of PN 10 and PN 16.



Contact Us

 [info@modc-eg.com](mailto:info@modc-eg.com)



+20 1228125604  
+20 1277725017

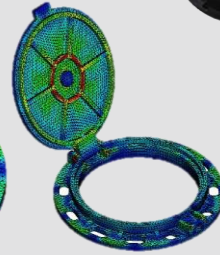
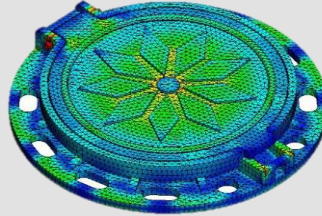
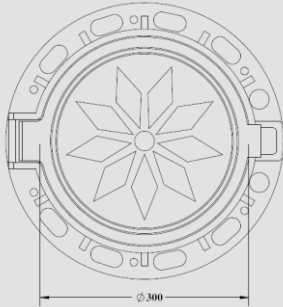
# MDC

MOSAIC DESIGN CORPORATION  
DETAILS THAT MATTER

# Ductile Cast Iron Access Cover

**Code:** DIAC B125 300 1 0001

**Description:** Ductile Cast Iron Access Cover  
– Ø300 mm - Load B125 - Class B - Green color



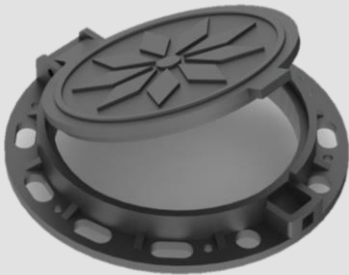
**Material:** Ductile Cast Iron (GGG50)

**Dimensions:** Ø300 mm / Opening Angle: Up to 130°

**Color :** RAL 6018 – Yellow Green

**Test Load:**

- Complies with EN124 standard – B125 (12.5 Tons)
- Footways, pedestrian areas and comparable areas, car park or parking decks

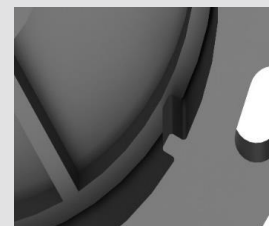


## Special Features:

- Mansoura 1 Presidential Palace Logo
- Fitted with tilted surfaces and slots for rain drainage
- Fitted with a non-removable Stainless-Steel hinge
- The Base is designed with 3 locking keys to be fitted to the polypropylene **INSPECTION CHAMBER** shown Above.


## Installation:

- The pp Inspection Chamber is to be installed first
- The Cover is to be lowered horizontally into place with the three locking pins fitted correctly



Contact Us

 [info@modc-eg.com](mailto:info@modc-eg.com)

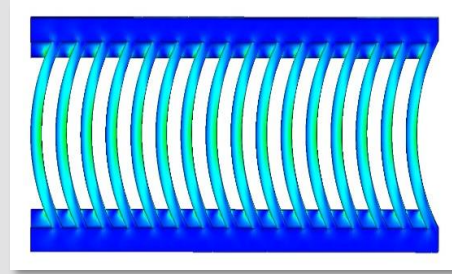
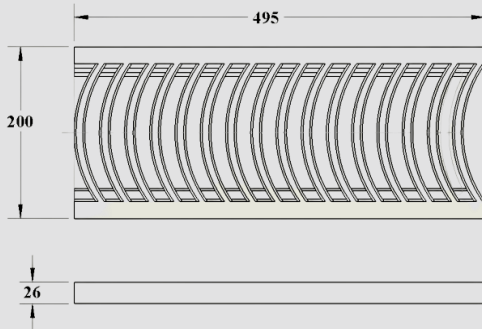
 +20 1228125604  
+20 1277725017

**MODC**  
MOSAIC DESIGN CORPORATION  
DETAILS THAT MATTER

# Ductile Cast Iron Linear Rain Drain

**Code:** DIRD C250 200 2 0001

**Description:** Ductile Cast Iron Frameless Linear Rain Drain - 200 X 500 mm - Load C250 - Class C - Black



**Material:** Ductile Cast Iron (GGG50)

**Dimensions:** 200 X 495 X 26 mm

**Color :** Black

**Weight :** 8.5 kg

**Coating :** Waterproof Bituminous Coating (Epoxy upon request)

**Test Load:**

- Complies with EN124 standard – C250 (25 Tons)
- Footways, pedestrian areas and comparable areas, car park or parking decks



**Special Features:**


- Project's Logo could be added upon request

**Installation:**

- The frame is to be cleaned thoroughly from dust, oils and debris.
- The Cover is to be lowered horizontally into place

Contact Us

 [info@modc-eg.com](mailto:info@modc-eg.com)

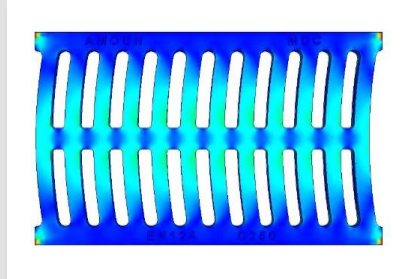
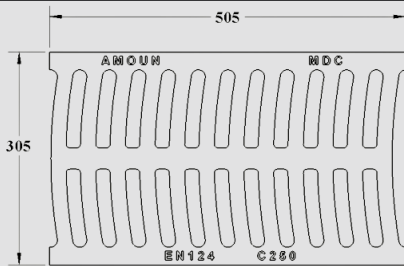
 +20 1228125604  
+20 1277725017

**MDC**  
MOSAIC DESIGN CORPORATION  
DETAILS THAT MATTER

# Ductile Cast Iron Linear Rain Drain

**Code:** DIRD C250 300 2 0002

**Description:** Ductile Cast Iron Frameless Linear Rain Drain - 300 X 500 mm - Load C250 - Class C - Black



**Material:** Ductile Cast Iron (GGG50)

**Dimensions:** 200 X 495 X 26 mm

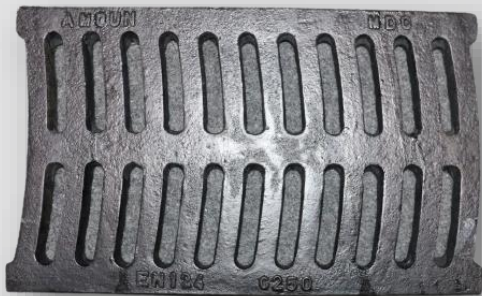
**Color :** Black

**Weight :** 8.5 kg

**Coating :** Waterproof Bituminous Coating (Epoxy upon request)

**Test Load:**

- Complies with EN124 standard – C250 (25 Tons)
- Footways, pedestrian areas and comparable areas, car park or parking decks



**Special Features:**


- Project's Logo could be added upon request

**Installation:**

- The frame is to be cleaned thoroughly from dust, oils and debris.
- The Cover is to be lowered horizontally into place

Contact Us

 [info@modc-eg.com](mailto:info@modc-eg.com)

 +20 1228125604  
+20 1277725017

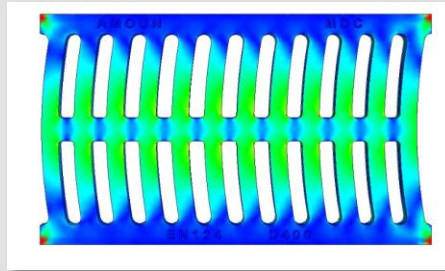
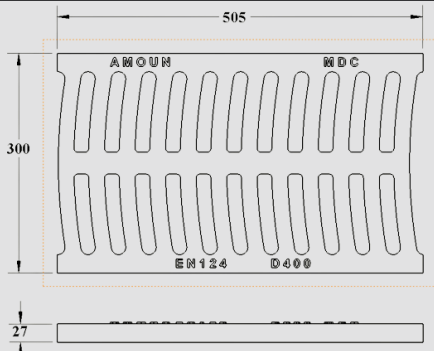
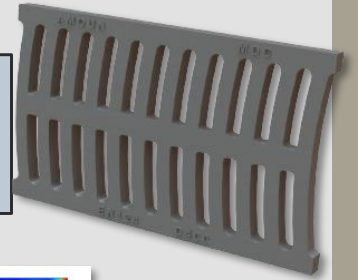
**MDC**  
MOSAIC DESIGN CORPORATION  
DETAILS THAT MATTER



# Ductile Cast Iron Linear Rain Drain

**Code:** DIRD C400 300 2 0003

**Description:** Ductile Cast Iron Frameless Linear Rain Drain - 300 X 500 mm - Load D400 - Class D - Black



**Material:** Ductile Cast Iron (GGG50)

**Dimensions:** 305 X 505 X 27 mm

**Color :** Black

**Coating :** Waterproof Bituminous Coating (Epoxy upon request)

**Test Load:**

- Complies with EN124 standard – D400 (40 Tons)
- Carriage ways of roads (including pedestrian streets), hard shoulders and parking areas, for all types of road vehicles



**Special Features:**


- Project's Logo could be added upon request

**Installation:**

- The frame is to be cleaned thoroughly from dust, oils and debris.
- The Cover is to be lowered horizontally into place

Contact Us

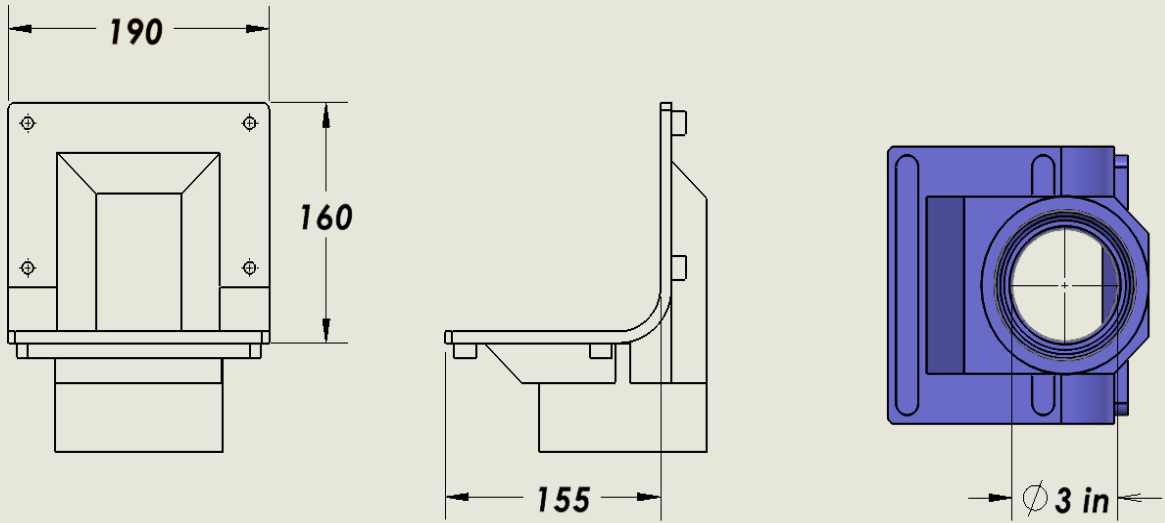
 [info@modc-eg.com](mailto:info@modc-eg.com)

 +20 1228125604  
+20 1277725017

**MDC**  
MOSAIC DESIGN CORPORATION  
DETAILS THAT MATTER

## 3-inch Cast Iron Side Drain

**Code:** GIAC D400 420 1 0002



**Description:** 3-inch Cast Iron Side Drain with a 304 stainless steel grating

**Material:** Grey Cast Iron + 304 stainless steel

**Dimensions:** A x A : 560 \* 520

B x B : 420 \* 420

H : 100

**Paint :** Epoxy

**Test Load:**

- Class D400 in compliance with EN 124 – Hard shoulders and parking Areas.
- light weight, heavy duty and hinged.



Contact Us

✉ [info@modc-eg.com](mailto:info@modc-eg.com)



+20 1228125604

+20 1277725017

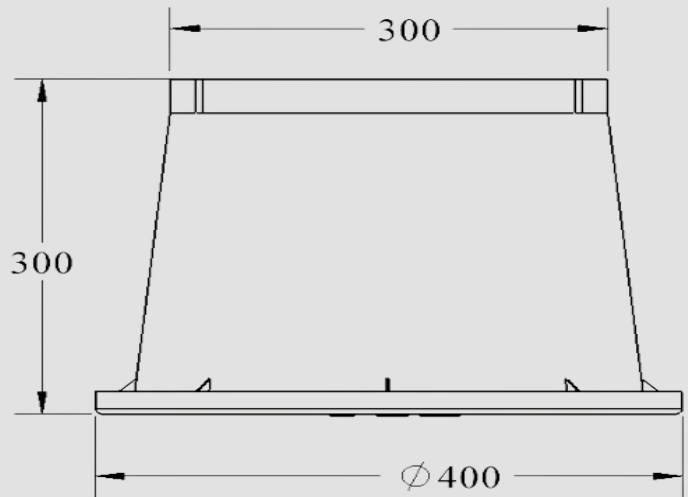
# MDC

MOSAIC DESIGN CORPORATION  
DETAILS THAT MATTER

# Polypropylene Inspection Chamber



Code: PPIC 300 300 350 1 0001



## Description

Copolymer Polypropylene Inspection Chamber – Ø300 mm - Black

**Material:** Copolymer Polypropylene Plastic

**Dimensions:** Ø300 mm / Height: 300 mm

**Color:** Black ( Available at any color)



## Key Features:

- Tough and flexible material to withstand sudden impacts
- A sturdy base and slanted silhouette for proper fixation
- Three locking key holes for a Ductile Cast Iron Access Cover to be installed on

## Installation:

- The earth is to be excavated to a suitable depth
- Soil is compacted and levelled
- Chamber is placed and buried

Contact Us

✉ [info@modc-eg.com](mailto:info@modc-eg.com)



+20 1228125604

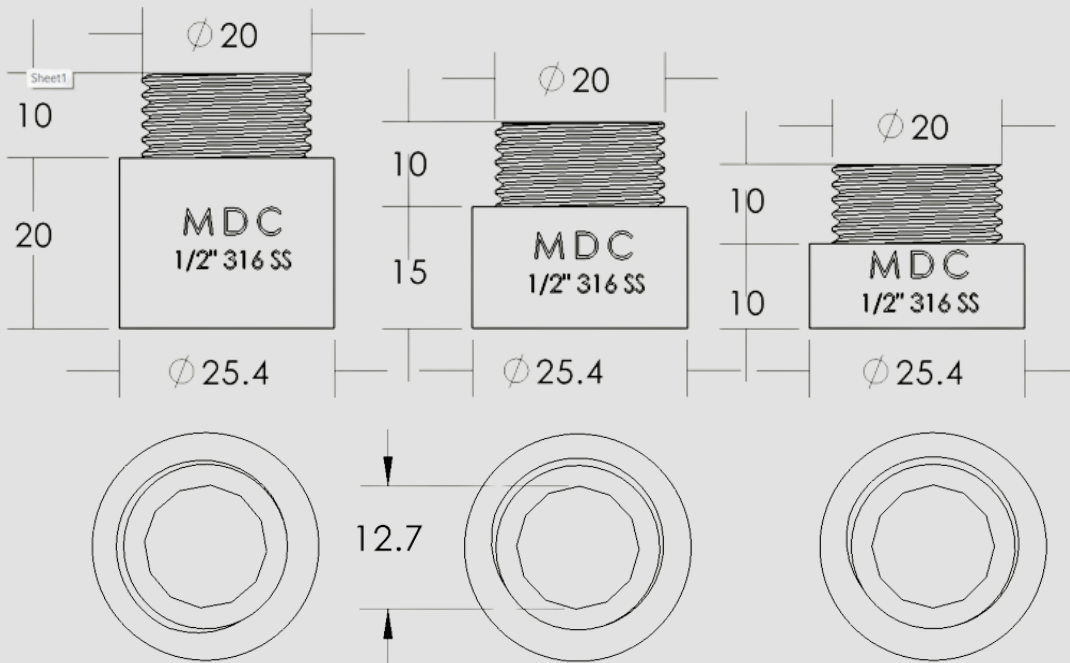
+20 1277725017

# MODC

MOSAIC DESIGN CORPORATION  
DETAILS THAT MATTER

# Stainless Steel ½" Lengthening Bushing Kit

Code: SSLB 500 200 250 300 1 0001



**Description:** Stainless Steel Water Lengthening Bushing Kit – ½" – Silver

**Material:** Grey Cast Iron + 304 stainless steel

**Dimensions:** A x A : 560 \* 520

B x B : 420 \* 420

H : 100

**Paint :** Epoxy

**Test Load:**

- Class D400 in compliance with EN 124 – Hard shoulders and parking Areas.
- light weight, heavy duty and hinged.



Contact Us

✉ [info@modc-eg.com](mailto:info@modc-eg.com)



+20 1228125604

+20 1277725017

# MDC

MOSAIC DESIGN CORPORATION  
DETAILS THAT MATTER

## Cement products

### Description

MDC manufactures a diverse range of cement-related products, including Boltless Lifter Classifier Liner Plate, Wet Process Liner Plate, Cooler Plate and other products

## Mining Parts



Hammer



Impact Plate



Rotating Crusher Drum



Fixed Jaw Plate



Cone Crusher



Svedala Crusher Hammer

Contact Us

 [info@modc-eg.com](mailto:info@modc-eg.com)



+20 1228125604  
+20 1277725017

**MDC**  
MOSAIC DESIGN CORPORATION  
DETAILS THAT MATTER



## Cement Parts



Boltless Lifter Classifier Liner Plate



Cooler Plate



lifter liner plate



Diaphragm Plate

## Construction Parts



Mixer Blade



CAT Grader Shank



Loader Bucket Tip



Mixer Arm

Contact Us

 [info@modc-eg.com](mailto:info@modc-eg.com)



+20 1228125604

+20 1277725017

# MODC

MOSAIC DESIGN CORPORATION  
DETAILS THAT MATTER

## Polyurethane products

### Description

MDC manufactures a range of high-quality rubber and polyurethane products, including industrial rollers and custom components, designed for various applications in manufacturing and industrial sectors



Contact Us

 [info@modc-eg.com](mailto:info@modc-eg.com)

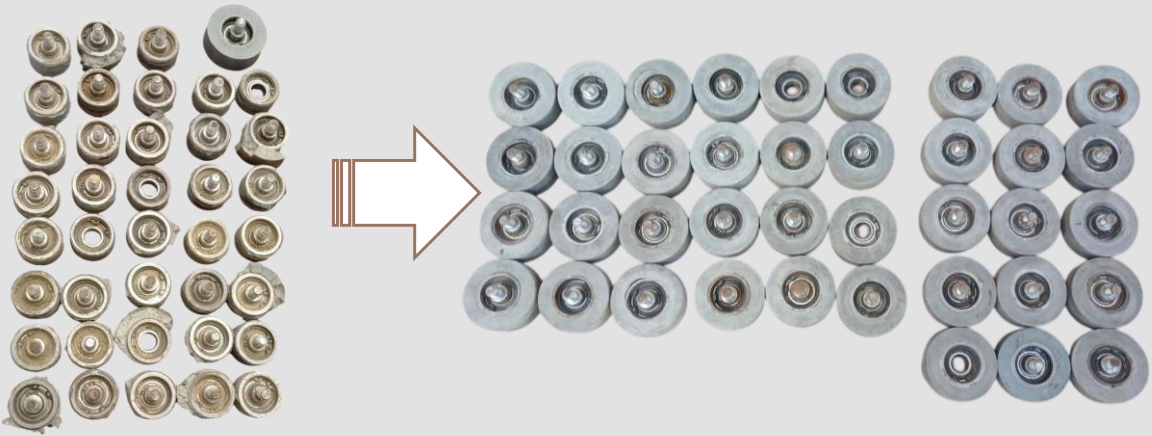


+20 1228125604  
+20 1277725017

**MDC**  
MOSAIC DESIGN CORPORATION  
DETAILS THAT MATTER

## Roller (Rubber / Polyurethane)

**Code:** RP 150 15 20 1 0001



**Description:** industrial rollers manufactured using either rubber or polyurethane, depending on client specifications. The hardness is measured and adjusted to meet the specific requirements of each application.

**Material:** Rubber or Polyurethane

**Dimensions:** OD 150mm, Thickness 20mm, Width 15mm



### Key Features:

- Made from high-quality rubber or polyurethane for durability and flexibility.
- Customizable hardness levels based on client needs (measured via Shore hardness scale).
- Designed for specialized industrial uses tailored to client specifications.
- Easy to integrate into various machinery.



Contact Us

✉ [info@modc-eg.com](mailto:info@modc-eg.com)



+20 1228125604

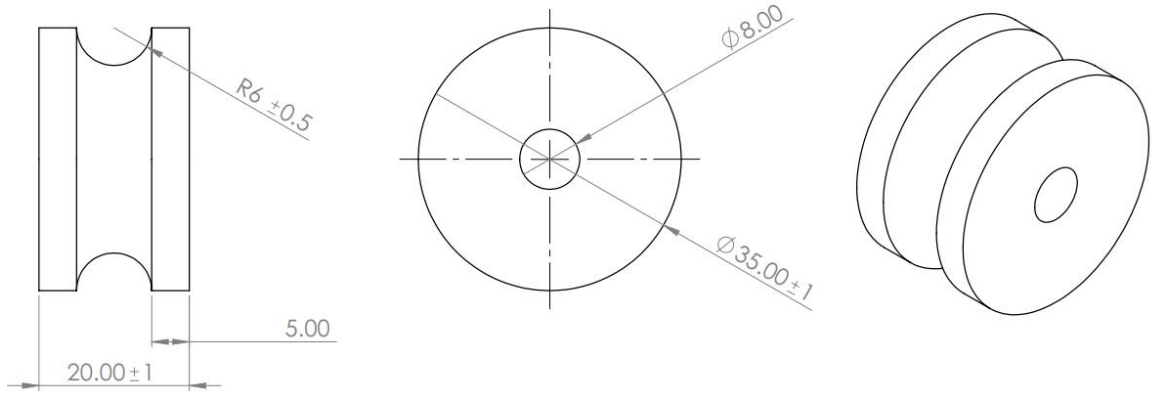
+20 1277725017

# MODC

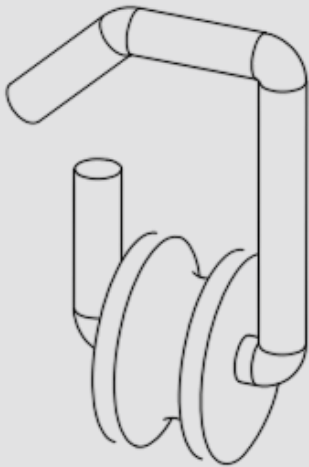
MOSAIC DESIGN CORPORATION  
DETAILS THAT MATTER

# Rubber Wheel

**Code:** NRH 500 20 35 8 0001



**Description:** Natural Rubber Wheel for Fan Hock 8mm



**Material:** Natural Rubber

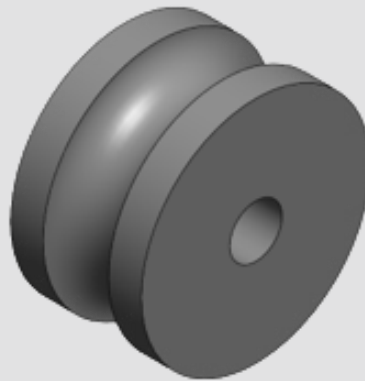
**Dimensions:** Outer Diameter: 35 mm

Inner Diameter: 8 mm

Width: 20 mm

**Color :** Black

**Hardness :** 60 Shore A



Contact Us

✉ [info@modc-eg.com](mailto:info@modc-eg.com)



+20 1228125604

+20 1277725017

# MODC

MOSAIC DESIGN CORPORATION  
DETAILS THAT MATTER

# Metal Balance Weight

**Code:** MBW 35 83 29 1 0001

## Description

Metal balance weight, made from cast iron, provide stability or counterbalance in machinery or equipment.



**Material:** Gray cast Iron

**Dimensions:** 35\*83\*29 mm

Hole Diameter: 5 mm

**Weight:** 470±10 gram



## Key Features:

- Durable cast iron coated with anti-rust spray.
- Customizable shape and size to fit specific machinery requirements.
- Mounting holes for secure attachment.
- Meet precise weight specifications for balancing applications.



Contact Us

 [info@modc-eg.com](mailto:info@modc-eg.com)



+20 1228125604

+20 1277725017

# MODC

MOSAIC DESIGN CORPORATION  
DETAILS THAT MATTER



# Plastic Balance Weight

**Code:** PBW 80 19 38 1 0001

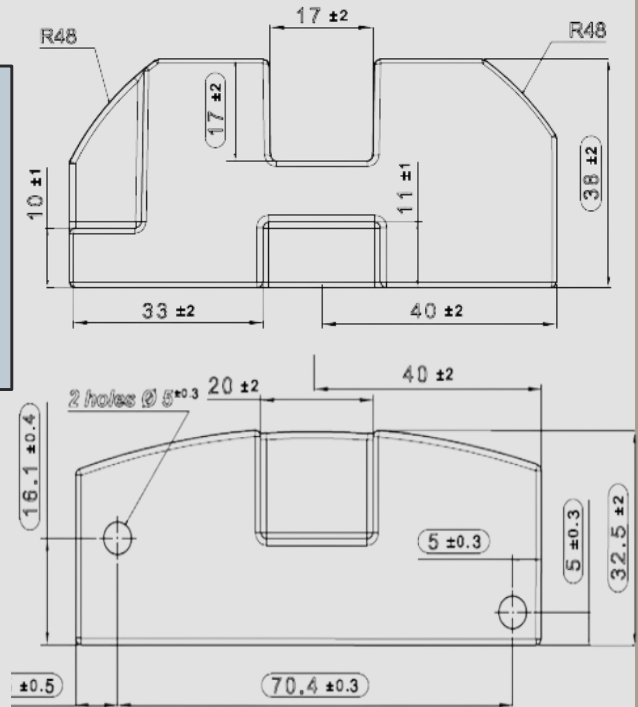
## Description

a plastic balance weight, molded then injected from a durable plastic material, designed to provide stability or counterbalance in machinery or equipment.

**Material:** Composite Plastic

**Dimensions:** 80\* 38\*19 mm ,  
Hole diameter: 5 mm

**Weight:** 92:102 gram



## Special Features:

- Made from polypropylene plastic for long-lasting performance.
- Customizable shape and size to fit specific machinery requirements.
- Features a mounting hole for secure attachment.
- Designed to meet precise weight specifications for balancing applications.



Contact Us

 [info@modc-eg.com](mailto:info@modc-eg.com)



+20 1228125604

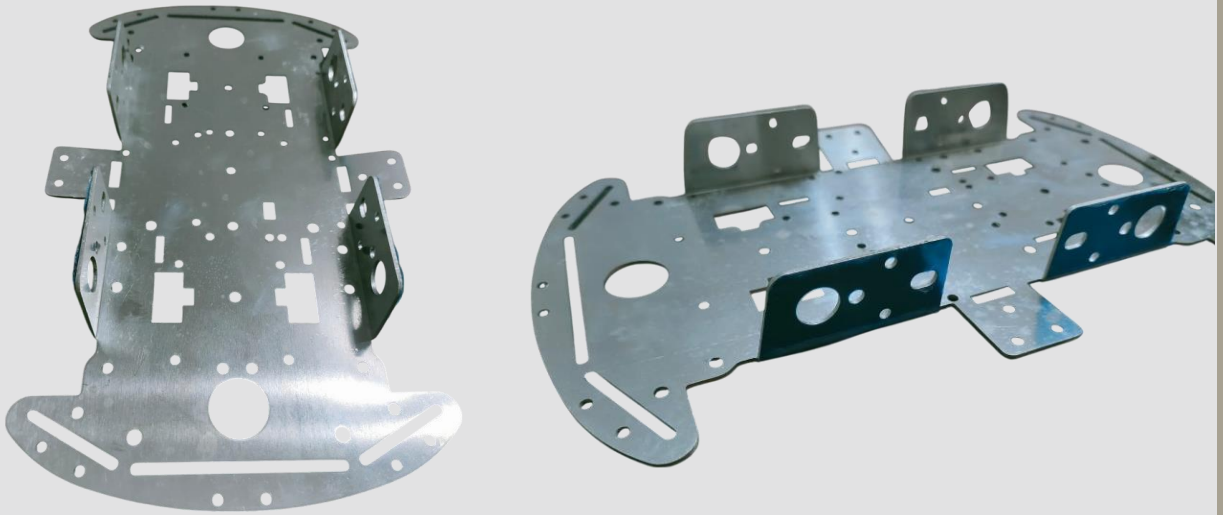
+20 1277725017

# MODC

MOSAIC DESIGN CORPORATION  
DETAILS THAT MATTER

# Car Robot

**Code:** CR 26 15 1 0001



## Description

A Robot Platform is a versatile mobile robot platform that uses four gear motors and four wheels to move around. It's often used in robotics projects for tasks like navigation, object manipulation, and exploration.

**Material:** Aluminum 1050

**Dimensions:** 26 cm \* 15 cm

## Key Features:

- Customizable design with multiple mounting holes for attaching sensors, cameras, or other components.
- Supports a wide range of robotics applications, including autonomous navigation and payload handling.
- Compact and lightweight frame for easy integration into different project setups.

Contact Us

✉ [info@modc-eg.com](mailto:info@modc-eg.com)



+20 1228125604  
+20 1277725017

**MDC**  
MOSAIC DESIGN CORPORATION  
DETAILS THAT MATTER

# MDC

*DETAILS THAT MATTER*

Contact Us  
[info@modc-eg.com](mailto:info@modc-eg.com)

+20 1228125604  
+20 1277725017



---

Smouha, Alexandria, Egypt  
Commercial Register No: 17869  
Tax ID: 645/885/754

[www.modc-eg.com](http://www.modc-eg.com)